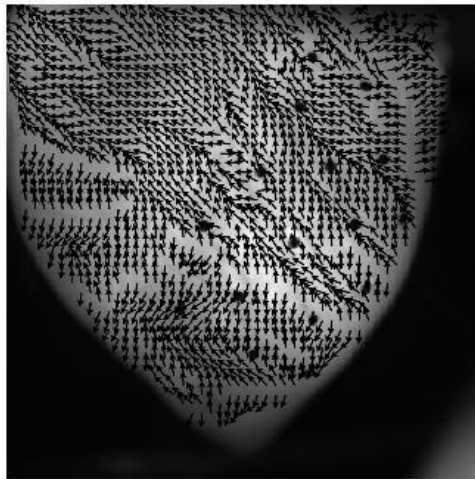


8-3-6. Conduction velocity analysis (add velocity analysis layer)

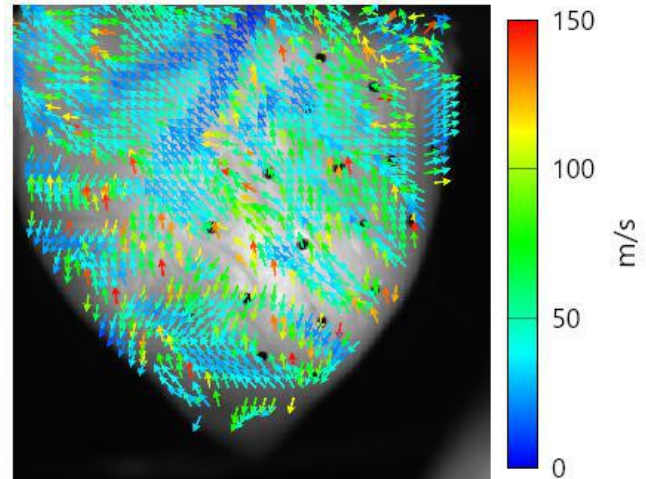
Select [Analyze]-[Add velocity analysis layer] to create and display a conduction velocity map. Conduction velocity is calculated by taking activation time difference between adjacent pixels.

Conduction velocity



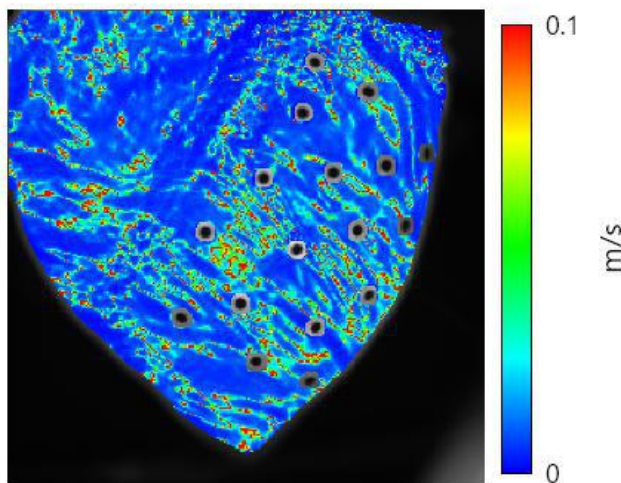
Display with black arrow

Conduction velocity



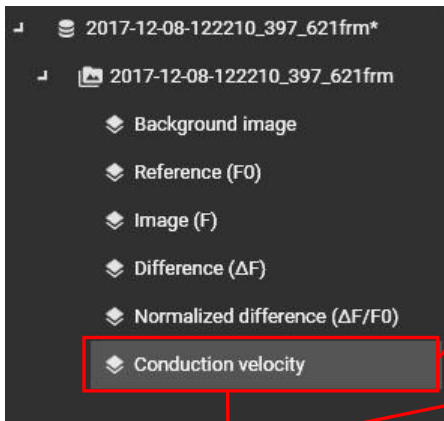
Display with colored arrows

Conduction velocity



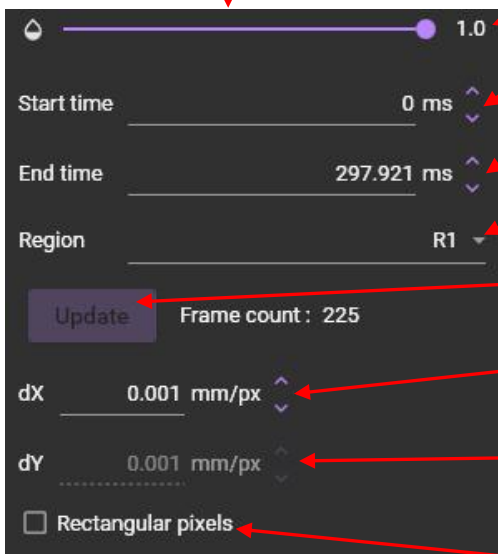
Color display of velocity

Operation	Description
Mouse over	Coordinates, speed and angle of that point are displayed in upper left of map
Scroll mouse wheel	Zoom in/out the map
right click	Export data: Save numerical data (conduction velocity) in CSV file format Export figure: Save conduction velocity map in image format (PNG/JPG/BMP) Export video: Save conduction velocity map in video format (avi).



Right click
Export data: Save numerical data in CSV file format
Rename: Change title

Click on "Conduction velocity" to display setting screen at the bottom left of the screen.



Specify the transparency of the layer. The lower it is, the more transparent the layer becomes.

Specifies start of time range of map display

Specifies end of time range of map display

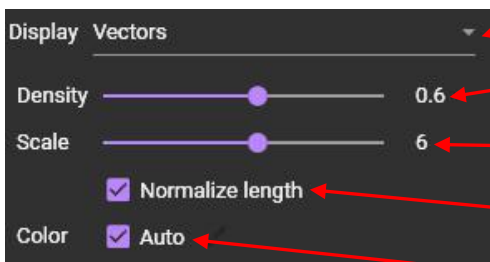
Select target area for map display (all pixels, ROI, mask layer)

It becomes active when "Star time", "End time", and "Region" are changed. Click to change map display.

Specify size (horizontal direction) per pixel in mm

Specify size (vertical direction) per pixel in mm (When [Rectangular pixels] are OFF, same value as dX is automatically input. When [Rectangular pixels] is ON, it can be specified.)

If one pixel is not square, turn it ON and set dY



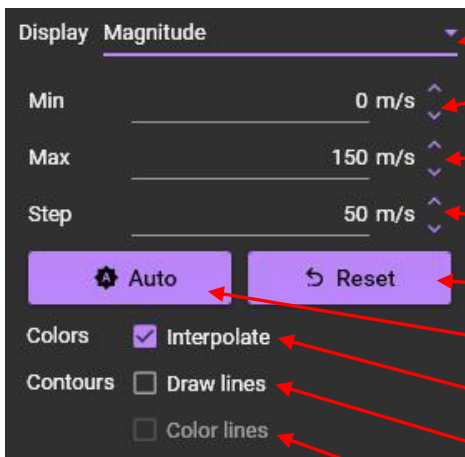
Display vector

Set display density of vector

Set vector scale

Unify vector lengths

When set to ON, vector is displayed in color according to color bar



Color display speed according to color bar settings

Specify minimum speed to display

Specify maximum speed to display

Specify time interval of dividing line

Reset settings to initial state

Automatic setting of optimum value

When turned on, the color display becomes gradation

Draw contour lines on map

Draw colored contour lines on a black and white background image to display map